



## New Minnesota Twins Stadium Progressing Under EPCO's TIGER™ Temp Lights

Over 100 EPCO TIGER™ 400 HID Temp Lights have been illuminating the construction of the new 45,000-seat baseball stadium where the Minnesota Twins will kick off their 2010 season next April. The temp lights will provide illumination for the one-million-plus square-foot project and were installed by the project's electrical contractor Gephart Electric (St. Paul, MN) and supplied by Viking Electric (Minneapolis, MN).

For the full story, visit [engproducts.com](http://engproducts.com) and click on What's New/Press Releases.



## 800 EPCO GFF Fluorescent Fixtures to Save Macy's Department Store Nearly \$35,000 in Annual Energy Savings

Noble Conservation Solutions, a Twin Cities Energy Conservation Company (ESCO), chose EPCO GFF Series™ Linear Fluorescent Lighting Fixtures for the Macy's Parking Garage retrofit project in downtown Minneapolis. The retrofit project also includes adjacent areas, such as stairwells, elevator-waiting areas and more, which will provide an estimated annual energy savings of \$34,967. In addition, the project will earn an estimated utility rebate of \$35,477 and an estimated EPAct tax credit of \$43,973.

*continued on page 2*

## 27-year Veteran Electrician is a Confirmed GFF Fixture Fan

It was love at first sight, so to speak. Rather, it took only one GFF Fixture installation to win over Tom Stabler, lead electrical contractor for the Macy's parking garage retrofit project in Downtown Minneapolis (see Macy's Department Store article). The Master Electrician explains, "You really have to love how darn simple it is to put up," says Stabler. "Two brackets, snap it in. The inside-cover snaps in, too. That's it. Pretty miraculous."

The 27-year veteran estimates that his installers save about 5 to 10 minutes of installation time per fixture. That translates into about 100 hours of saved labor costs. "Speed is the name of the game, and these went up fast. The mounting brackets are very flexible, which makes it much easier to work with.

*continued on page 2*

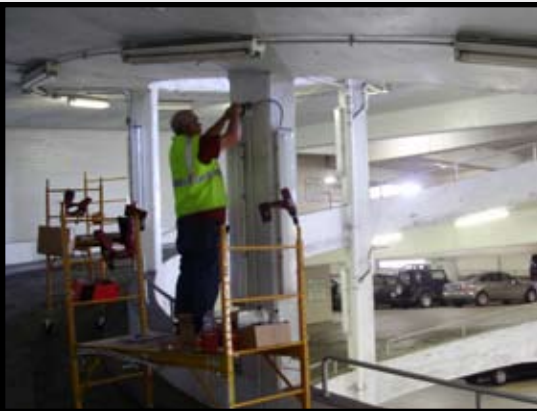
## Macy's Department Store...continued from page 1

Noble Project Manager and Master Electrician Jay Lewis explained why EPCO's UL listed, domestically manufactured GFF fixtures were chosen for the project. "They are extremely easy to install. In 20 years of installing lighting fixtures, I've never run across any as easy to work with," he says. "In fact, we've projected that these fixtures should make maintenance easier as well, reducing annual maintenance costs by \$1,150.

For the full release, visit [engproducts.com](http://engproducts.com) and click on What's New/Press Releases.



**Noble Conservation Solutions:**  
Lev Buslovick - Chief Operating Officer (left)  
Matt Noble - President (right)



## GFF Fixture Fan...continued from page 1

The brackets are versatile as well, so we mounted them vertically on the sidewalls of the building adjacent to the ramp," he says.

Stabler also talks about how much safer and easier it is to maintain these fixtures. "The plastic tethered safety loops on the gear tray pop out, so it's easy to swap them out and change the ballast in the shop rather than change the entire fixture in the ramp, where cars are whizzing by."

He added that EPCO's GFF fixtures are ideal for any location where a pressure washer would be used, like a parking ramp, food processing facilities, laundries, car washes, industrial facilities, etc.

For more information about EPCO GFF fixtures, visit [engproducts.com](http://engproducts.com) and click on Products/Lighting/Utility.



UL NSF NEMA 6/6P IP67 CERTIFIED

## Promo Talk

**The 2009 Temporary Lighting Promotion** - Starts September 1st and runs through December 31st. The promotion features the new TIGER 400 and TIGERcub 175 HID Lighting Fixtures with the Pulse-Start Technology.



And when you purchase any Temporary Lighting Product during the promotion period, EPCO will include a "FREE" limited edition EPCO TorchLight Driver Tool in every carton.



For more information contact your Sales Representative or EPCO Inside Sales.

## ProSeries™ Utility Light Features New Merchandising Kit

Contractor demand for EPCO's new ProSeries Utility Light continues to grow. This Utility Light is ideal for food processing facilities, commercial kitchens, industrial facilities, livestock containment buildings, laundries, saunas, pedestrian and road tunnels, elevator shafts, storage buildings, car washes, refrigerators/freezers and more.



Some of the unique benefits of this lighting fixture include:

- An easy-to-install 18-cubic-inch Octi-Junction Box™ that provides extra capacity for an additional power circuit.
- Eight mounting brackets on the Octi-Junction Box are in line with the 1/2" and 3/4" trade-size knockouts and eliminate a 2" x 4" stub-in.
- An optional impact-resistant, quarter-turn safety cage that attaches to the Octi-Junction Box without tools.
- An integrated junction box cover features a "captive" set screw and posi-stop detent that expedites fixture installation.
- A nickel-plated brass screw shell resists corrosion and is recessed approximately 1" to accommodate high-profile compact fluorescent or incandescent lamps (rated for a 150 Watt incandescent lamp, maximum).



With every qualifying sales order of twenty-four (24) ProSeries Utility Lights you will also receive the new Merchandising Kit. The kit includes a ProSeries Utility Light mounted on a attractive acrylic counter display (9" w x 12" d) with an integral literature rack, a ProSeries application poster, 50 Product Data Sheets and an EPCO Header

Card.

Product samples are available for evaluation. Contact your EPCO Sales Representative immediately for more product and pricing information.

## NEW GFF Series™ Linear Lighting Fixtures Merchandising Kit

With every qualifying sales order of twenty (20) 4-Foot GFF Series fixtures or ten (10) 8-Foot GFF Series fixtures you will receive a GFF Merchandising Kit. The kit includes a 4-Foot GFF Series Lighting



Display Fixture, GFF Merchandising Poster, 50 Product Data Sheets, and an EPCO Header Card.

## 10% Discount on Tube Guards

You will receive 10% Off your order of EPCO Tube Guards in any combination of part numbers. The 10% discount applies only if you have not previously purchased any EPCO Tube Guards or if you have previously purchased Tube Guards but are now adding different Tube Guard part numbers. To be eligible for the discount you must submit a sales order that includes a minimum order of two (2) cartons of Tube Guards, 48 units total. Offer expires September 30, 2009. For more information contact your Sales Representative.



## Is This Newsletter Addressed Correctly?

To ensure that you receive future mailing of EPCO's Customer Newsletter, let us know if there are any changes that should be made to the mailing label. Please complete the following and FAX to:

**Engineered Products Company - 800.336.2801- Attention Marketing.**

- Please Correct the Name, Title and/or Address.
- Substitute this Name for the Name shown on the mailing label.
- Add this name to your mailing list.
- Remove this name from your mailing list.

Name: \_\_\_\_\_

Title: \_\_\_\_\_

Address: \_\_\_\_\_

City: \_\_\_\_\_ State: \_\_\_\_\_ ZIP: \_\_\_\_\_

Telephone: \_\_\_\_\_ Fax: \_\_\_\_\_

E-Mail: \_\_\_\_\_

5401 Smetana Drive  
Minnetonka, MN 55343